

Invest in yourself. Invest with each other. Build your family's wealth.

The PPS Investments ***Family*** ***Network***

Welcome to the PPS Investments Family Network, where you can connect your family members' investments to benefit from reduced family administration fees. So, the more you invest as a family, the more you could save on administration fees.

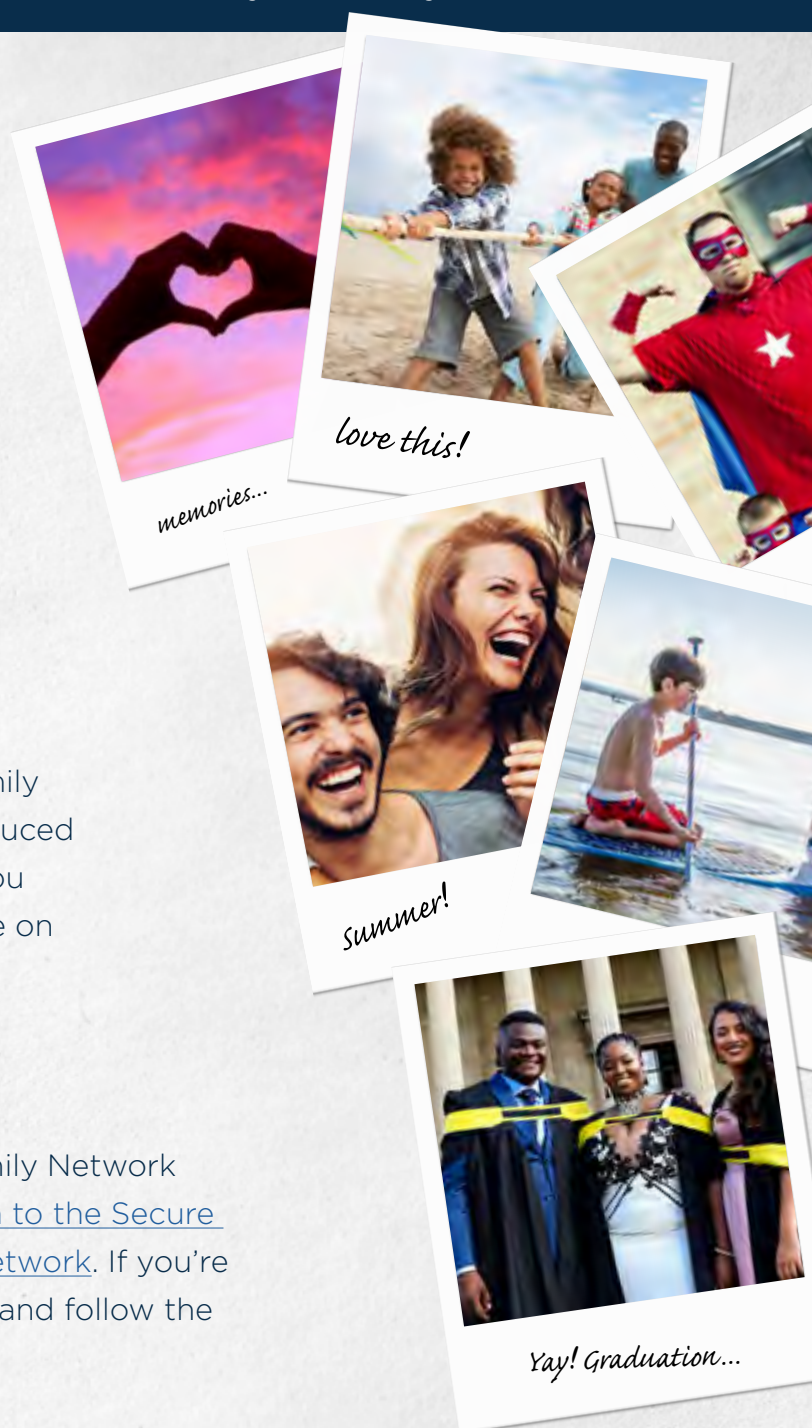
How to create a Family Network

As the core investor, you can create a Family Network on the PPS Investments Secure Site. [Login to the Secure Site, to create and activate your Family Network](#). If you're not a registered user, simply click register and follow the prompts to create a profile.

Activating a Family Network

When you login to the PPS Investments Secure Site, you can:

- **Create and manage your Family Network**
- **Start adding family members to create your Family Network**
- **Invite family members to connect to your Family Network**
- **Determine family administration fee based on the family market value**



Core investor

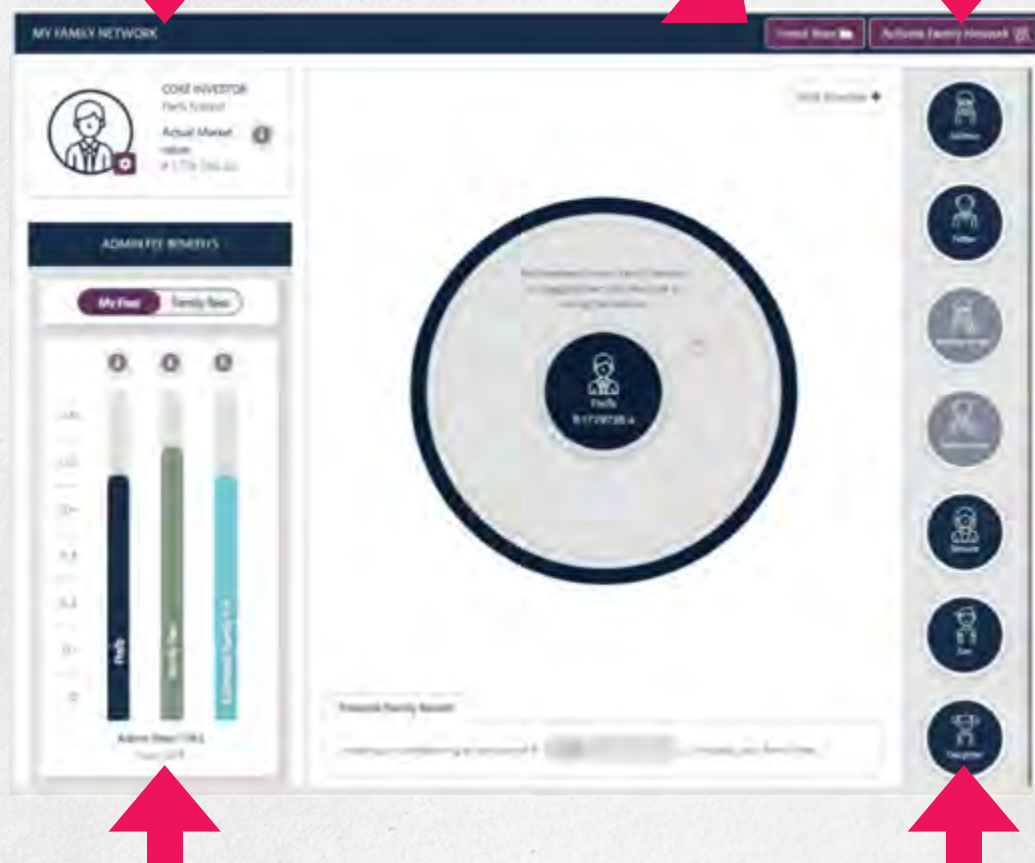
As the core investor, your market value will be pre-populated here.

Invest now

You can also click on 'Invest Now' to start a new investment.

Activate Family Network

When you're comfortable with your Family Network structure, click on 'Activate Family Network'. Your family members will be invited to join the Family Network. It's up to you to encourage them to accept the invitation to join the Family Network.



Administrations fee benefits

Get an overview of the individual and family administration fees that could be applied to your family network based on the family market value. The more you save as a family, the more you could save on family administration fees.

Add/remove family members

You can start adding family members to create your Family Network. Drag & drop family members using the icons on the right-hand side or click on 'Add Member'. All family members' investments have to be on the PPS Investments platform to qualify for the reduced administration fee.

Contact us

For queries on the Family Network, visit www.pps.co.za/familynetwork.

If you need more information about the PPS Investments Family Network, please consult your PPS Investments accredited financial adviser. Alternatively, feel free to contact us directly. Contact us on 0860 468 777 (0860 INV PPS) or at clientservices@ppsinvestments.co.za.

